

Westinghouse Type VCP-W, VCPW-ND, VCPW-SE, VCP-WR Vacuum Circuit Breaker Renewal Parts

January 16, 1996
 New Information
 Prices effective January 16, 1996
 and subject to change without notice.
 Refer to Selling Policy 25-000
 Mailed to: E, D, C/33-700A.

**Renewal Parts for Type VCP-W,
 VCPW-ND, VCPW-SE and VCP-WR
 Vacuum Circuit Breakers**
 ANSI 5, 7.5, 15 and 27 kV

Parts Identification

This Price List contains descriptions and style numbers for VCP-W breakers including 5, 7.5, 15, and 27 kV VCP-W, VCPW-ND, VCPW-SE, and the VCP-WR family of breakers. Additional information and illustrations are shown in Section 7 of IB 32-255 (VCP-W, VCPW-ND, VCPW-SE), and Section 8 of IB 8295A61H01 (VCP-WR). The style numbers listed are for ANSI-rated breakers only.

Ordering Information

1. Description and style number.
2. Quantity.
3. Enter all orders on VISTA Order Entry Suffix Q19.

Description Notes

1. Parts are identified by Breaker Type in the top row and Part Description in the left column.
2. Interrupter Assemblies are described by voltage class and rating.
 Example:
 50/250, 1200A-58 kA where
 50 = voltage class of 5 kV
 250 = MVA rating
 1200A = continuous current rating
 58 kA = Close and latch rating (rms)
3. Unique parts for 27 kV and VCPW-ND have been identified. Where a 27 kV common part is needed, select the VCPW-SE style. Where VCPW-ND common part is needed, select the VCP-W style for this component.

Table of Contents

Page

Interrupter Assembly.....	2
Primary Disconnect.....	3
Phase Barriers.....	3
Trip D-Shaft.....	3
Trip Latch (Hatchet).....	4
Push Rod Assembly.....	4
Tie Bar.....	4
Shock Absorber.....	4
Charging Motor.....	4
Motor Brush Kit.....	4
Spring Release (Close) Coil.....	5
Second Shunt Trip Kit.....	5
Shunt Trip Coil.....	5
Undervoltage Trip Kit.....	5
Undervoltage Trip Coil.....	5
Anti-Pump Relay.....	5
Motor Cut Off Switch.....	6
Latch Check Switch.....	6
Position Switch.....	6
Auxiliary Switch.....	6
Ground Contact Assembly.....	6
Front Panel (without Eschuteon).....	6
Breaker Wheel.....	7
Fastener Kit.....	7
Labels Kit.....	7
Recommended Spare Parts.....	8



Type VCP-W



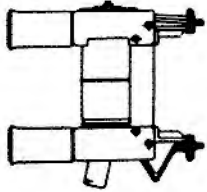
Type VCPW-ND



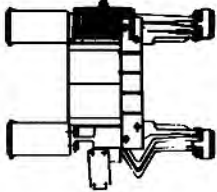
Type VCPW-SE

Product Code 6071
 Discount Symbol Y1

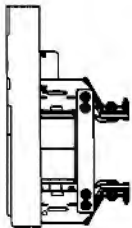
January 16, 1996



VCP-W, VCPW-ND, VCPW-SE,
 VCP-29WR,
 VCP-29WRSE 1200A, 2000A



VCP-W, VCPW-SE, VCP-29WR,
 VCP-29WRSE 3000A



VCP-20WR



VCP-18WR

Interrupter Assembly ①

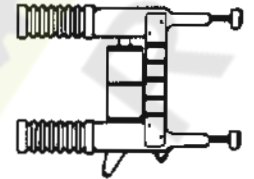
Description	Ordering Information						List Price
	VCP-W	VCPW-SE	VCP-29WR	VCP-29WRSE	VCP-20WR	VCP-18WR	
VCPW-ND 50/250, 1200A-58 kA	8297A02H03						\$1,987
50/250, 1200A-58 kA	8297A02H01	8297A02H02	3A73901H01		3A73919H01	3A73923H01	1,987
50/250H, 1200A-78 kA	8297A05H01	8297A05H02					2,515
50/250, 2000A-58 kA	8297A03H01	8297A03H02	3A73902H01		3A73920H01	3A73924H01	2,705
50/250H, 2000A-78 kA	8297A06H01	8297A06H02					2,927
50/250, 3000A-58 kA	8297A04H01	8297A04H02	3A73903H01				3,888
50/250H, 3000A-78 kA	8297A07H01	8297A07H02					4,199
50/350, 1200A-78 kA② (7 in. V.I.)	8297A08H01	8297A08H02					2,552
50/350, 1200A-78 kA② (5 in. V.I.)	8297A08H03	8297A08H04	3A73904H01		3A73921H01	3A73932H01	2,552
50/350, 2000A-78 kA② (7 in. V.I.)	8297A09H01	8297A09H02					3,186
50/350, 2000A-78 kA② (5 in. V.I.)	8297A09H03	8297A09H04	3A73905H01		3A73922H01	3A73933H01	3,186
50/350, 3000A-78 kA	8297A10H01	8297A10H02	3A73906H01				5,209
75/500, 1200A-66 kA② (5 in. V.I.)	8297A11H01	8297A11H02					2,809
75/500, 1200A-66 kA② (4 in. V.I.)	8297A11H03	8297A11H04	3A73907H01	3A73907H02		3A73925H01	2,809
75/500, 2000A-66 kA	8297A12H01	8297A12H02	3A73908H01	3A73908H02		3A73926H01	3,352
75/500, 3000A-66 kA	8297A13H01	8297A13H02	3A73909H01	3A73909H02			5,126
150/500, 600A-37 kA						3A73927H01	2,125
150/500, 1200A-37 kA	8297A17H01	8297A17H02	3A73910H01	3A73910H02		3A73928H01	2,286
150/500H, 1200A-58 kA	8297A20H01	8297A20H02					3,136
150/500, 2000A-37 kA	8297A18H01	8297A18H02	3A73911H01	3A73911H02		3A73929H01	2,953
150/500H, 2000A-58 kA	8297A21H01	8297A21H02					3,539
150/500, 3000A-37 kA	8297A19H01	8297A19H02	3A73912H01	3A73912H02			4,499
150/500H, 3000A-58 kA	8297A22H01	8297A22H02					4,907
150/750, 1200A-58 kA	8297A23H01	8297A23H02	3A73913H01	3A73913H02		3A73930H01	3,416
150/750H, 1200A-77 kA	8297A26H01	8297A26H02					3,723
150/750, 2000A-58 kA	8297A24H01	8297A24H02	3A73914H01	3A73914H02		3A73931H01	4,278
150/750H, 2000A-77 kA	8297A27H01	8297A27H02					4,506
150/750, 3000A-58 kA	8297A25H01	8297A25H02	3A73915H01	3A73915H02			5,580
150/750H, 3000A-77 kA	8297A28H01	8297A28H02					6,513
150/1000, 1200A-77 kA ② (7 in. V.I.)	8297A29H01	8297A29H02					4,809
150/1000, 1200A-77 kA ② (5 in. V.I.)	8297A29H03	8297A29H04	3A73916H01	3A73916H02			4,809

① Quantity (3) interrupter assemblies are required per breaker. The style and list price represents quantity (1) interrupter assembly.
 ② Vacuum interrupter (V.I.) assemblies have both 5-inch and 7-inch or 5-inch and 4-inch vacuum interrupters. These are identified by either (4 in. V.I.), (5 in. V.I.), or (7 in. V.I.) at the end of the description. When ordering match the V.I. diameter and corresponding rating.



Interrupter Assembly,® continued

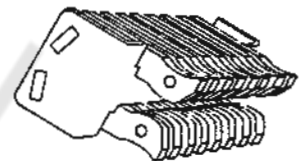
Description	Ordering Information						List Price
	VCP-W	VCPW-SE	VCP-29WR	VCP-29WRSE	VCP-20WR	VCP-18WR	
150/1000, 2000A 77 kA® (7 in. V.I.)	8297A30H01	8297A30H02					\$5,974
150/1000, 2000A-77 kA® (5 in. V.I.)	8297A30H03	8297A30H04	3A73917H01	3A73917H02			5,974
150/1000, 3000A-77 kA	8297A31H01	8297A31H02	3A73918H01	3A73918H02			6,636
270/25, 630A-40 kA	8299A04H01						4,519
270/25, 1200A-40 kA	8299A05H01						4,808
270/25, 2000A-40 kA	8299A02H01						6,199



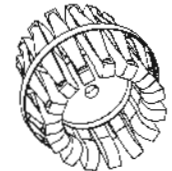
27kV VCP-W

Primary Disconnect ®

Description	Ordering Information						List Price
	VCP-W	VCPW-SE	VCP-29WR	VCP-29WRSE	VCP-20WR	VCP-18WR	
VCPW ND 5 kV, 1200A	502A851G12						\$275
Up to 15 kV, 1200A	508B022G01	508B022G01					275
Up to 15 kV, 2000A	508B012G01	508B012G01					275
Up to 15 kV, 3000A	692C037G01	692C037G01					585
27 kV, 630A	699B352G01						585
27 kV, 1200A	699B352G01						585
27 kV, 2000A	502A852G02						585



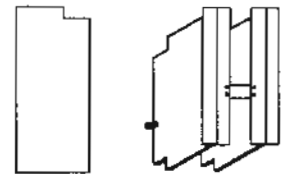
1200A and 2000A



All 3000A, All 27kV, and VCPW-ND

Phase Barriers

Description	Ordering Information						List Price
	VCP-W	VCPW-SE	VCP-29WR	VCP-29WRSE	VCP-20WR	VCP-18WR	
VCPW-ND 5 kV®	8829C10H01						\$ 85
Up to 15 kV®	691C176H04	691C176H04	691C176H04	691C176H04	690C848H01	5677B34H01	85
All 50/350, 150/1000 & 3000A (7" V.I.)	691C648G01	691C648G01	691C648G01	691C648G01			155
27 kV®	691C218H01						85
50/350, 150/1000 1200A and 2000A (5" V.I.)	691C176H04	691C176H04					85

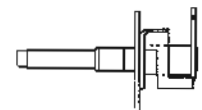


All 27kV and All Breakers Up to 15kV

All 50/350, 150/1000 (7" V.I.), and all 3000A

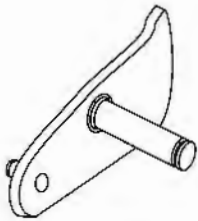
Trip D-Shaft

Description	Ordering Information						List Price
	VCP-W	VCPW-SE	VCP-29WR	VCP-29WRSE	VCP-20WR	VCP-18WR	
	694C638G01	694C638G01	694C638G01	694C638G01	694C638G01	694C638G01	\$498



All Breakers

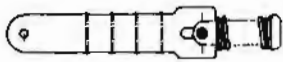
- ① Quantity (3) interrupter assemblies are required per breaker. The style and list price represents quantity (1) interrupter assembly.
- ② Vacuum interrupter (V.I.) assemblies have both 5-inch and 7-inch or 5-inch and 4-inch vacuum interrupters. These are identified by either (4 in. V.I.), (5 in. V.I.), or (7in. V.I.) at the end of the description. When ordering match the V.I. diameter and corresponding rating.
- ③ A phase barrier style represents a quantity of (1) barrier per style. VCP-W breakers may require 2 or 4 barriers per breaker (Reference IB 32-255).
- ④ Quantity (6) primary disconnects are required per breaker. Style numbers listed above represent quantity (1) primary disconnect.



All Breakers

Trip Latch (Hatchet)

Description	Ordering Information						List Price
	VCP-W	VCPW-SE	VCP-29WR	VCP-29WRSE	VCP-20WR	VCP-18WR	
Breakers Shipped before June '94	699B040G02	699B040G02	699B040G02	699B040G02	699B040G02	699B040G02	\$141
Breakers Shipped after June '94	699B040G03	699B040G03	699B040G03	699B040G03	699B040G03	699B040G03	141



All Breakers

Push Rod Assembly

Description	Ordering Information						List Price
	VCP-W	VCPW-SE	VCP-29WR	VCP-29WRSE	VCP-20WR	VCP-18WR	
VCPW-ND 5 kV (blue)	692C799G01					①	\$250
Up to 5 kV (blue)			692C799G01		690C854G01		250
Up to 5 kV (red)			692C799G02		690C854G02		250
Up to 15 kV (white)	691C650G01		691C650G01				250
		691C650G02		691C650G02			425
Up to 15 kV (blue)	691C651G01		691C651G01				250
		691C651G02		691C651G02			425
Up to 15 kV (red)	691C651G03		691C651G03				250
		691C651G04		691C651G04			425
27 kV (blue)	691C241G01						425



All Breakers

Tie Bar

Description	Ordering Information						List Price
	VCP-W	VCPW-SE	VCP-29WR	VCP-29WRSE	VCP-20WR	VCP-18WR	
Up to 5 kV					690C818H01		\$125
Up to 15 kV	3619A09H01		3619A09H01				125
		691C271H01		691C271H01			325
27 kV	691C223H01						325
Up to 15 kV, Lower Support (350, 1000 MVA; 1200, 2000A)	5697B19H01	686C575H01	5697B19H01	686C575H01			325



All Breakers

Shock Absorber

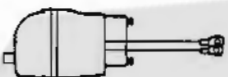
Description	Ordering Information						List Price
	VCP-W	VCPW-SE	VCP-29WR	VCP-29WRSE	VCP-20WR	VCP-18WR	
	5677R26H01	5677R26H01	5677B26H01	5677B26H01		5677B26H01	\$160



Spade Terminals for VCP-W

Charging Motor

Description	Ordering Information						List Price
	VCP-W	VCPW-SE	VCP-29WR	VCP-29WRSE	VCP-20WR	VCP-18WR	
48 Vdc	699B196G03	699B196G06	699B196G06	699B196G06	699B196G06	699B196G06	\$625
125 Vdc / 120 Vac	699B196G01	699B196G04	699B196G04	699B196G04	699B196G04	699B196G04	625
250 Vdc / 240 Vac	699B196G02	699B196G05	699B196G05	699B196G05	699B196G05	699B196G05	625



Ring Terminals for VCPW-SE, VCP-29WR, 29WRSE, 20WR, 18WR

Motor Brush Kit

Description	Ordering Information						List Price
	VCP-W	VCPW-SE	VCP-29WR	VCP-29WRSE	VCP-20WR	VCP-18WR	
	8063A77G01	8063A77G01	8063A77G01	8063A77G01	8063A77G01	8063A77G01	\$65



All Motors

① The VCP-18WR Push Rod Assembly is included with the Pole Unit Replacement.



Spring Release (Close) Coil

Description	Ordering Information						List Price
	VCP-W	VCPW-SE	VCP-29WR	VCP-29WRSE	VCP-20WR	VCP-18WR	
48 Vdc	3759A76G01	3759A76G11	3759A76G11	3759A76G11	3759A76G11	3759A76G11	\$125
125 Vdc / 120 Vac	3759A76G02	3759A76G12	3759A76G12	3759A76G12	3759A76G12	3759A76G12	125
250 Vdc / 240 Vac	3759A76G03	3759A76G13	3759A76G13	3759A76G13	3759A76G13	3759A76G13	125
Rectifier (120/240 Vac)Ⓢ	3759A79G01	3759A79G02	3759A79G02	3759A79G02	3759A79G02	3759A79G02	160



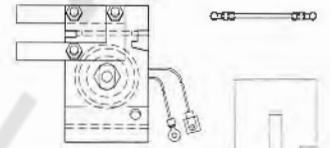
Spade Terminals for VCP-W and VCPW-ND



Ring Terminals for VCPW-SE, VCP-29WR, 29WRSE, 20WR, 18WR

Second Shunt Trip Kit

Description	Ordering Information						List Price
	VCP-W	VCPW-SE	VCP-29WR	VCP-29WRSE	VCP-20WR	VCP-18WR	
24 Vdc	694C636G04	8794C84G14	8794C84G14	8794C84G14	8794C84G14	8794C84G04	\$400
48 Vdc	694C636G01	8794C84G11	8794C84G11	8794C84G11	8794C84G11	8794C84G01	400
125 Vdc	694C636G02	8794C84G12	8794C84G12	8794C84G12	8794C84G12	8794C84G02	400
250 Vdc	694C636G03	8794C84G13	8794C84G13	8794C84G13	8794C84G13	8794C84G03	400



Spade Terminals for VCP-W and VCPW-ND



Ring Terminals for All Other Breakers

Shunt Trip Coil

Description	Ordering Information						List Price
	VCP-W	VCPW-SE	VCP-29WR	VCP-29WRSE	VCP-20WR	VCP-18WR	
24 Vdc	3759A76G04	3759A76G14	3759A76G14	3759A76G14	3759A76G14	3759A76G14	\$125
48 Vdc	3759A76G01	3759A76G11	3759A76G11	3759A76G11	3759A76G11	3759A76G11	125
125 Vdc / 125 Vac CAP	3759A76G02	3759A76G12	3759A76G12	3759A76G12	3759A76G12	3759A76G12	125
250 Vdc / 240 Vac CAP	3759A76G03	3759A76G13	3759A76G13	3759A76G13	3759A76G13	3759A76G13	125



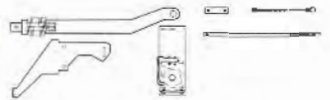
Spade Terminals for VCP-W and VCPW-ND



Ring Terminals for VCPW-SE, VCP-29WR, 29WRSE, 20WR, 18WR

UV Trip Kit

Description	Ordering Information						List Price
	VCP-W	VCPW-SE	VCP-29WR	VCP-29WRSE	VCP-20WR	VCP-18WR	
48 Vdc	691C274G01	691C274G01	8794C81G01	8794C81G01	8794C81G01	8794C81G01	\$1,188
125 Vdc	691C274G02	691C274G02	8794C81G02	8794C81G02	8794C81G02	8794C81G02	1,188
250 Vdc	691C274G03	691C274G03	8794C81G03	8794C81G03	8794C81G03	8794C81G03	1,188
120 Vac	691C274G04	691C274G04	8794C81G04	8794C81G04	8794C81G04	8794C81G04	1,188
240 Vac	691C274G05	691C274G05	8794C81G05	8794C81G05	8794C81G05	8794C81G05	1,188



(Rectifier is included for AC Voltages Only)

UV Trip Coil

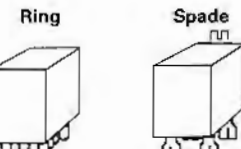
Description	Ordering Information						List Price
	VCP-W	VCPW-SE	VCP-29WR	VCP-29WRSE	VCP-20WR	VCP-18WR	
48 Vdc	8064A19G01	8064A19G01	8064A19G01	8064A19G01	8064A19G01	8064A19G01	\$125
125 Vdc	8064A19G02	8064A19G02	8064A19G02	8064A19G02	8064A19G02	8064A19G02	125
250 Vdc	8064A19G03	8064A19G03	8064A19G03	8064A19G03	8064A19G03	8064A19G03	125
120 Vac	8064A19G07	8064A19G07	8064A19G07	8064A19G07	8064A19G07	8064A19G07	285
240 Vac	8064A19G08	8064A19G08	8064A19G08	8064A19G08	8064A19G08	8064A19G08	285



Ring Terminals

Anti-Pump (Y) Relay

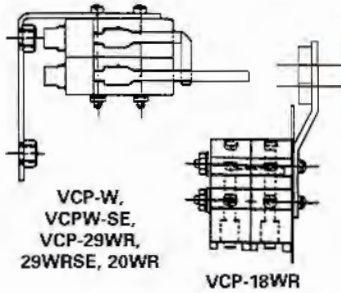
Description	Ordering Information						List Price
	VCP-W	VCPW-SE	VCP-29WR	VCP-29WRSE	VCP-20WR	VCP-18WR	
48 Vdc	3759A74G03	8237A27H03	8237A27H03	8237A27H03	8237A27H03	8237A27H03	\$85
125 Vdc	3759A74G04	8237A27H04	8237A27H04	8237A27H04	8237A27H04	8237A27H04	85
250 Vdc	3759A74G05	8237A27H05	8237A27H05	8237A27H05	8237A27H05	8237A27H05	85
120 Vac	3759A74G01	8237A27H01	8237A27H01	8237A27H01	8237A27H01	8237A27H01	85
240 Vac	3759A74G02	8237A27H02	8237A27H02	8237A27H02	8237A27H02	8237A27H02	85



All 27 kV, VCP-29WR, 29WRSE, 20WR, 18WR, and VCPW-SE

VCP-W and VCPW-ND

Ⓢ A rectifier is required for AC Closed Circuits Only.



Motor Cut Off Switch

Description	Ordering Information						List Price
	VCP-W	VCPW-SE	VCP-29WR	VCP-29WRSE	VCP-20WR	VCP-18WR	
	699B199G01	699B199G04	699B199G04	699B199G04	699B199G04	5677B02G04	\$300



All Breakers

Latch Check Switch

Description	Ordering Information						List Price
	VCP-W	VCPW-SE	VCP-29WR	VCP-29WRSE	VCP-20WR	VCP-18WR	
	699B147G01	699B147H04	699B147H04	699B147H04	699B147H04	699B147H04	\$180



All Breakers

Position Switch (PS1)

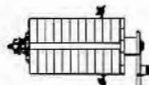
Description	Ordering Information						List Price
	VCP-W	VCPW-SE	VCP-29WR	VCP-29WRSE	VCP-20WR	VCP-18WR	
	8064A03G01	699B147H01	699B147H01	699B147H01	699B147H01	699B147H01	\$165

Position Switch (PS2)

Description	Ordering Information						List Price
	VCP-W	VCPW-SE	VCP-29WR	VCP-29WRSE	VCP-20WR	VCP-18WR	
	3759A93G01	3759A93H02	3759A93H02	3759A93H02	3759A93H02	3759A93H02	\$165



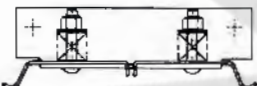
Spade Terminals for VCP-W



Ring Terminals for VCPW-SE,
VCP-29WR, 29WRSE, 20WR,
18WR, VCPW-ND

Auxiliary Switch

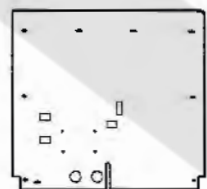
Description	Ordering Information						List Price
	VCP-W	VCPW-SE	VCP-29WR	VCP-29WRSE	VCP-20WR	VCP-18WR	
VCPW-ND	698B822H01	5697B02G01	5697B02G01	5697B02G01	5697B02G01	5697B02G01	\$230
	5697B02G02						230



VCP-W, VCPW-SE and VCPW-ND

Ground Contact Assembly

Description	Ordering Information						List Price
	VCP-W	VCPW-SE	VCP-29WR	VCP-29WRSE	VCP-20WR	VCP-18WR	
VCPW-ND	691C506G01	691C506G01					\$100
	691C506G02						100



All Breakers

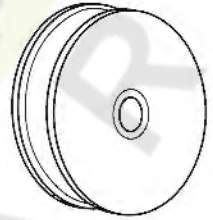
Front Panel (without Eschuteon)

Description	Ordering Information						List Price
	VCP-W	VCPW-SE	VCP-29WR	VCP-29WRSE	VCP-20WR	VCP-18WR	
VCPW-ND	8829C48H01						\$350
3000A, 350 & 1000 MVA	691C655H01	691C655H01	691C655H01	691C655H01	6617C70H02		350
27 kV	691C214H01						350
All Others	691C192H02	691C192H02	691C192H02	691C192H02		4D13368H01	350



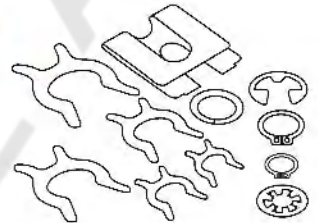
Breaker Wheel

Description	Ordering Information						List Price
	VCP-W	VCPW-SE	VCP-29WR	VCP-29WRSE	VCP-20WR	VCP-18WR	
VCPW-ND	8237A50H01						\$125
All Others	3617A99H02	3617A99H02					125



Fastener Kit

Description	Ordering Information						List Price
	VCP-W	VCPW-SE	VCP-29WR	VCP-29WRSE	VCP-20WR	VCP-18WR	
	8061A01G01	8061A01G01	8061A01G01	8061A01G01	8061A01G01	8061A01G01	\$50



Labels Kit

Description	Ordering Information						List Price
	VCP-W	VCPW-SE	VCP-29WR	VCP-29WRSE	VCP-20WR	VCP-18WR	
	8295A45G01	8295A45G01	8295A45G01	8295A45G01	8295A45G01	8295A45G01	\$45



VCP-WR Series 29

VCP-WR Series 20

VCP-WR Series 18



Medium Voltage Product Literature

SA 11671	VacClad-W Switchgear
SA 11671AR	VacClad-W Arc Resistant Switchgear
SA 11713	VCP-W World Class Switchgear
IB 32-255	VCP-W Breaker Instruction Manual
IB 8295A61H01	VCP-WR Breaker Instruction Manual
RPD 32-255	VacClad-W Breaker and Switchgear Renewal Parts Data
AD 32-265	VacClad-W Application Data

Recommended Spare Parts for Stock

An adequate stock of spare parts will help minimize emergency situations and can substantially reduce production downtime. The quantities listed are recommended for 5 breakers of the same rating. **Please include complete style numbers**, as required for your application, and forward all inquiries to your local sales representative.

Item	Recommended Quantity for Stock	Description	Style Number
1	3	Interrupter Assembly	①
2	6	Primary Disconnect	①
3	3	Push Rod Assembly	①
4	1	Charging Motor	①
5	1	Motor Brush Kit	8063A77G01
6	1	Spring Release (Close) Coil	①
7	1	Shunt Trip Coil	①
8	1	Anti-Pump Relay	①
9	1	Fastener Kit	8061A01G01
10	1	Labels Kit	8295A45G01

① Select per Breaker Rating or Control Ratings.

Complete Factory and ANSI Design Testing

All VCP-W Vacuum Circuit Breakers meet or exceed applicable ANSI standards. Tests include: mechanical endurance, power interruption, momentary current, and BIL. Certification to the applicable design tests are available from Cutler-Hammer upon request. Certified factory production test reports are also available.

Warranty

VCP-W Vacuum Circuit Breakers and genuine VCP-W renewal parts are covered under the standard Cutler-Hammer warranty. Contact Cutler-Hammer for details.

Notice for Commercial Grade Components

THE DESCRIPTION AND SPECIFICATIONS FOR THE PRODUCTS DESCRIBED HEREIN ARE PROVIDED FOR GENERAL COMMERCIAL USE AND NOT APPLICABLE FOR USE IN A NUCLEAR POWER PLANT. ADDITIONAL CERTIFICATION MAY BE AVAILABLE UPON REQUEST TO QUALIFY THESE PRODUCTS FOR USE IN SAFETY-RELATED APPLICATIONS IN A NUCLEAR FACILITY.

Cutler-Hammer

Westinghouse & Cutler-Hammer Products
Five Parkway Center
Pittsburgh, Pennsylvania, U.S.A. 15220