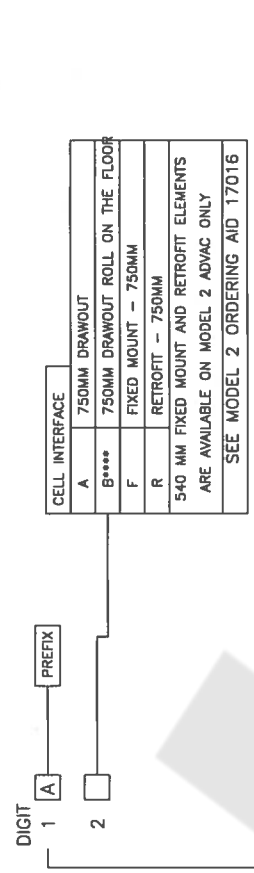


NOO ADVAC ORDERING AID "MODEL 3"



B**** ROLL ON THE FLOOR BREAKERS ARE ONLY TO BE USED WITH SWITCH GEAR THAT IS EXPRESSLY DESIGNED FOR THEIR USE.

BREAKER SPECIFICATIONS

	MAX WAVE FACTOR (K) (KV, RMS)	K FACTOR	INTERRUPT TIME (CYCLES)	MAX. SYM. INTERRUPT SHORT-TIME CURRENT (KA, RMS)	CLOSE & TRIP (KV, CREST)	LIGHTNING WITHSTAND (KV, CREST) (BL)	LOW VOLTAGE WITHSTAND (HI-PO) (KV, RMS)	MVA INTERRUPTING CAPABILITY (KV, REF. ONLY)	CELL INTERFACE AVAILABILITY
A	4.76	1.00	5	25	65	60	19	NA	A,F
B	4.76	1.00	5	31.5	82	60	19	NA	A,F
C	4.76	1.00	5	40	104	60	19	NA	A,F
D	4.76	1.00	5	50	130	60	19	NA	A,F
E	8.25	1.00	5	40	104	95	36	NA	A
F	15	1.00	5	20	52	95	36	NA	A,F
G	15	1.00	5	25	65	95	36	NA	A,F
H	15	1.00	5	31.5	82	95	36	NA	A,F
J	15	1.00	5	40	104	95	36	NA	A,F
K	15	1.00	5	50	130	95	36	NA	A,F
L									

REF: ANSI C37.06-2000, TABLES 1 & 4
 110 KV BILL IS NOT AVAILABLE ON MODEL 3 BREAKERS SEE MODEL 2 ORDERING AID 17016

CONTINUOUS CURRENT

1	1200A
2	2000A
3	3000A

DIGITS 6-15 LOCATED ON SHEET 2

REV	DATE	REVISION DESCRIPTION	BY	REV	DATE	REVISION DESCRIPTION	BY
5	10-05-04	[6560] NOTE ON ROLL ON FLOOR + 1000A CAP SWITCH	PRT				
4	3-30-04	[6451] ADDED B ON # 2 FOR ROLL ON THE FLOOR	PRT				
3	10-7-03	[6431] ADDED 50 KA BREAKERS TO ORDERING AID	PRT				
6	9-22-05	[8027] ECN 6560 & 6579 both rev 5, consolidated changes	RET	2	8-19-03	[6406] + GENERAL PURPOSE RATINGS. +NOO.	MKJ
5	1-5-05	[6579] ADDED RACKING PIN MONITOR ON #11	RET	1	7/11/03	[6390] ADD 24 VOLT CONTROL COMPONENTS & - 50 ka	PRT

DIMENSIONS IN MILLIMETERS

UNLESS OTHERWISE SPECIFIED THE FOLLOWING TOLERANCES ARE APPLICABLE

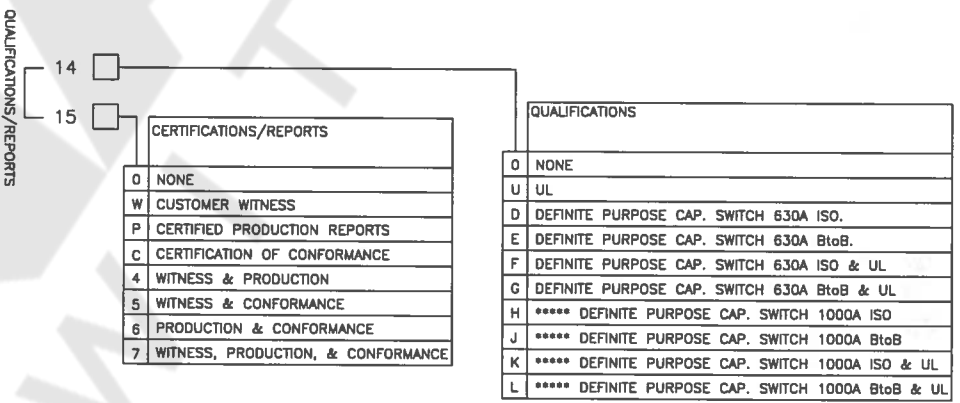
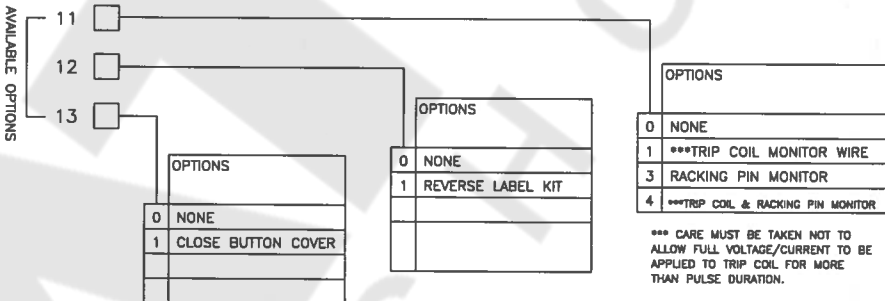
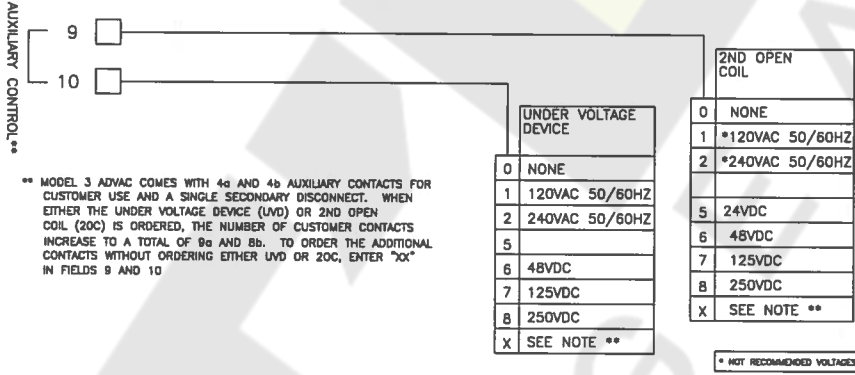
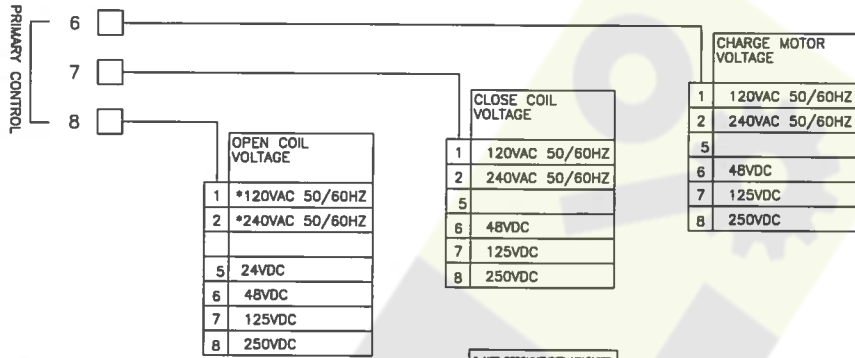
LINEAR	OVER	UND	HO	HO	HO	HO
0-25	0.0	0	0.05	0.05	0.10	0.10
25-50	0.0	0	0.05	0.05	0.10	0.10
50-100	0.0	0	0.05	0.05	0.10	0.10
100-150	0.0	0	0.05	0.05	0.10	0.10
150-200	0.0	0	0.05	0.05	0.10	0.10
200-300	0.0	0	0.05	0.05	0.10	0.10
300-500	0.0	0	0.05	0.05	0.10	0.10
500-1000	0.0	0	0.05	0.05	0.10	0.10
1000-2000	0.0	0	0.05	0.05	0.10	0.10
2000-3000	0.0	0	0.05	0.05	0.10	0.10

REF: ADVAC	REV: 6	TITLE: ADVAC ORDERING AID "MODEL 3"
DATE DRN: 2/13/03	DATE REL: 03/27/03	DWG NO.: 17030
DRN: GRC	CKD: PRT	APP'D: PRT
NEXT ASSY:		SHEET: 1 of 2
THIS DRAWING IS THE PROPERTY OF ABB AND CONTAINS PROPRIETARY AND CONFIDENTIAL INFORMATION WHICH MUST NOT BE DUPLICATED OR DISCLOSED OTHER THAN AS EXPRESSLY AUTHORIZED BY ABB.		
ABB		ABB Inc. FLORENCE, S.C., U.S.A.
ECN No.: 6360		

NationalSwitchgear.com

DIGITS 1-5 LOCATED ON SHEET 1

ADVAC ORDERING AID "MODEL 3"



APPLICATION NOTES:

CATALOG NUMBERS GENERATED USING THIS ORDERING AID REPRESENTS ALL AVAILABLE BREAKER CONFIGURATIONS. (NO SPECIALS OR ADDERS ARE AVAILABLE)

ALL ADVAC BREAKERS ARE DUAL RATED FOR 50 AND 60Hz. THIS INCLUDES PRIMARY AND CONTROL FREQUENCY. THE BREAKER NAMEPLATE WILL READ 50/60 Hz.

BILLS OF MATERIAL ARE PER 17031

REV	DATE	REVISION DESCRIPTION	BY	REV	DATE	REVISION DESCRIPTION	BY
6	9-27-05	[8027] ECN 6580 & 6579 both rev 5, consolidated changes	RET	2	8-19-03	[6406] + GENERAL PURPOSE RATINGS, +N00.	MJK
5	1-3-05	[6579] ADDED RACKING PIN MONITOR ON #11	RET	1	7/11/03	[6390] ADD 24 VOLT CONTROL COMPONENTS & - 50 IA	PRT
				5	10-05-04	[6580] NOTE ON ROLL ON FLOOR + 1000A CAP SWITCH	PRT
				4	3-30-04	[6451] ADDED B ON # 2 FOR ROLL ON THE FLOOR	PRT
				3	10-7-03	[6431] ADDED 50 IA BREAKERS TO ORDERING AID	PRT

DATE	REV	DATE	REV
2/13/03	1	2/13/03	1
03/03	2	03/03	2

REV	TITLE	DATE	DATE	DATE	DATE
6	ADVAC ORDERING AID "MODEL 3"	2/13/03	2/13/03	2/13/03	2/13/03
		03/03	03/03	03/03	03/03

DATE	REV	DATE	REV
2/13/03	1	2/13/03	1
03/03	2	03/03	2

DATE	REV	DATE	REV
2/13/03	1	2/13/03	1
03/03	2	03/03	2

DATE	REV	DATE	REV
2/13/03	1	2/13/03	1
03/03	2	03/03	2

DATE	REV	DATE	REV
2/13/03	1	2/13/03	1
03/03	2	03/03	2

DATE	REV	DATE	REV
2/13/03	1	2/13/03	1
03/03	2	03/03	2

DATE	REV	DATE	REV
2/13/03	1	2/13/03	1
03/03	2	03/03	2

DATE	REV	DATE	REV
2/13/03	1	2/13/03	1
03/03	2	03/03	2

DATE	REV	DATE	REV
2/13/03	1	2/13/03	1
03/03	2	03/03	2

DATE	REV	DATE	REV
2/13/03	1	2/13/03	1
03/03	2	03/03	2

DATE	REV	DATE	REV
2/13/03	1	2/13/03	1
03/03	2	03/03	2

DATE	REV	DATE	REV
2/13/03	1	2/13/03	1
03/03	2	03/03	2

DATE	REV	DATE	REV
2/13/03	1	2/13/03	1
03/03	2	03/03	2

DATE	REV	DATE	REV
2/13/03	1	2/13/03	1
03/03	2	03/03	2

DATE	REV	DATE	REV
2/13/03	1	2/13/03	1
03/03	2	03/03	2

DATE	REV	DATE	REV
2/13/03	1	2/13/03	1
03/03	2	03/03	2