

# Westinghouse Type VCP-W, VCPW-ND, VCPW-SE, VCP-WR Vacuum Circuit Breaker Renewal Parts

January 16, 1996  
 New Information  
 Prices effective January 16, 1996  
 and subject to change without notice.  
 Refer to Selling Policy 25-000  
 Mailed to: E, D, C/33-700A.

**Renewal Parts for Type VCP-W,  
 VCPW-ND, VCPW-SE and VCP-WR  
 Vacuum Circuit Breakers**  
 ANSI 5, 7.5, 15 and 27 kV

## Parts Identification

This Price List contains descriptions and style numbers for VCP-W breakers including 5, 7.5, 15, and 27 kV VCP-W, VCPW-ND, VCPW-SE, and the VCP-WR family of breakers. Additional information and illustrations are shown in Section 7 of IB 32-255 (VCP-W, VCPW-ND, VCPW-SE), and Section 8 of IB 8295A61H01 (VCP-WR). The style numbers listed are for ANSI-rated breakers only.

## Ordering Information

1. Description and style number.
2. Quantity.
3. Enter all orders on VISTA Order Entry Suffix Q19.

## Description Notes

1. Parts are identified by Breaker Type in the top row and Part Description in the left column.
2. Interrupter Assemblies are described by voltage class and rating.  
 Example:  
 50/250, 1200A-58 kA where  
 50 = voltage class of 5 kV  
 250 = MVA rating  
 1200A = continuous current rating  
 58 kA = Close and latch rating (rms)
3. Unique parts for 27 kV and VCPW-ND have been identified. Where a 27 kV common part is needed, select the VCPW-SE style. Where VCPW-ND common part is needed, select the VCP-W style for this component.

## Table of Contents

## Page

|                                      |   |
|--------------------------------------|---|
| Interrupter Assembly.....            | 2 |
| Primary Disconnect.....              | 3 |
| Phase Barriers.....                  | 3 |
| Trip D-Shaft.....                    | 3 |
| Trip Latch (Hatchet).....            | 4 |
| Push Rod Assembly.....               | 4 |
| Tie Bar.....                         | 4 |
| Shock Absorber.....                  | 4 |
| Charging Motor.....                  | 4 |
| Motor Brush Kit.....                 | 4 |
| Spring Release (Close) Coil.....     | 5 |
| Second Shunt Trip Kit.....           | 5 |
| Shunt Trip Coil.....                 | 5 |
| Undervoltage Trip Kit.....           | 5 |
| Undervoltage Trip Coil.....          | 5 |
| Anti-Pump Relay.....                 | 5 |
| Motor Cut Off Switch.....            | 6 |
| Latch Check Switch.....              | 6 |
| Position Switch.....                 | 6 |
| Auxiliary Switch.....                | 6 |
| Ground Contact Assembly.....         | 6 |
| Front Panel (without Eschuteon)..... | 6 |
| Breaker Wheel.....                   | 7 |
| Fastener Kit.....                    | 7 |
| Labels Kit.....                      | 7 |
| Recommended Spare Parts.....         | 8 |



Type VCP-W



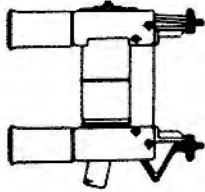
Type VCPW-ND



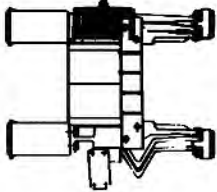
Type VCPW-SE

Product Code 6071  
 Discount Symbol Y1

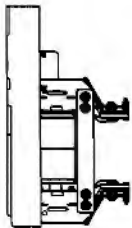
January 16, 1996



VCP-W, VCPW-ND, VCPW-SE,  
 VCP-29WR,  
 VCP-29WRSE 1200A, 2000A



VCP-W, VCPW-SE, VCP-29WR,  
 VCP-29WRSE 3000A



VCP-20WR



VCP-18WR

**Interrupter Assembly ①**

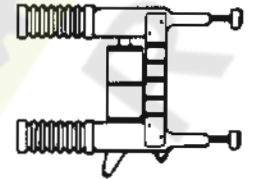
| Description                             | Ordering Information |            |            |            |            |            | List Price |
|---|----------------------|------------|------------|------------|------------|------------|------------|
|   | VCP-W                | VCPW-SE    | VCP-29WR   | VCP-29WRSE | VCP-20WR   | VCP-18WR   |            |
| VCPW-ND 50/250,<br>1200A-58 kA          | 8297A02H03           |            |            |            |            |            | \$1,987    |
| 50/250, 1200A-58 kA                     | 8297A02H01           | 8297A02H02 | 3A73901H01 |            | 3A73919H01 | 3A73923H01 | 1,987      |
| 50/250H, 1200A-78 kA                    | 8297A05H01           | 8297A05H02 |            |            |            |            | 2,515      |
| 50/250, 2000A-58 kA                     | 8297A03H01           | 8297A03H02 | 3A73902H01 |            | 3A73920H01 | 3A73924H01 | 2,705      |
| 50/250H, 2000A-78 kA                    | 8297A06H01           | 8297A06H02 |            |            |            |            | 2,927      |
| 50/250, 3000A-58 kA                     | 8297A04H01           | 8297A04H02 | 3A73903H01 |            |            |            | 3,888      |
| 50/250H, 3000A-78 kA                    | 8297A07H01           | 8297A07H02 |            |            |            |            | 4,199      |
| 50/350, 1200A-78 kA②<br>(7 in. V.I.)    | 8297A08H01           | 8297A08H02 |            |            |            |            | 2,552      |
| 50/350, 1200A-78 kA②<br>(5 in. V.I.)    | 8297A08H03           | 8297A08H04 | 3A73904H01 |            | 3A73921H01 | 3A73932H01 | 2,552      |
| 50/350, 2000A-78 kA②<br>(7 in. V.I.)    | 8297A09H01           | 8297A09H02 |            |            |            |            | 3,186      |
| 50/350, 2000A-78 kA②<br>(5 in. V.I.)    | 8297A09H03           | 8297A09H04 | 3A73905H01 |            | 3A73922H01 | 3A73933H01 | 3,186      |
| 50/350, 3000A-78 kA                     | 8297A10H01           | 8297A10H02 | 3A73906H01 |            |            |            | 5,209      |
| 75/500, 1200A-66 kA②<br>(5 in. V.I.)    | 8297A11H01           | 8297A11H02 |            |            |            |            | 2,809      |
| 75/500, 1200A-66 kA②<br>(4 in. V.I.)    | 8297A11H03           | 8297A11H04 | 3A73907H01 | 3A73907H02 |            | 3A73925H01 | 2,809      |
| 75/500, 2000A-66 kA                     | 8297A12H01           | 8297A12H02 | 3A73908H01 | 3A73908H02 |            | 3A73926H01 | 3,352      |
| 75/500, 3000A-66 kA                     | 8297A13H01           | 8297A13H02 | 3A73909H01 | 3A73909H02 |            |            | 5,126      |
| 150/500, 600A-37 kA                     |                      |            |            |            |            | 3A73927H01 | 2,125      |
| 150/500, 1200A-37 kA                    | 8297A17H01           | 8297A17H02 | 3A73910H01 | 3A73910H02 |            | 3A73928H01 | 2,286      |
| 150/500H, 1200A-58 kA                   | 8297A20H01           | 8297A20H02 |            |            |            |            | 3,136      |
| 150/500, 2000A-37 kA                    | 8297A18H01           | 8297A18H02 | 3A73911H01 | 3A73911H02 |            | 3A73929H01 | 2,953      |
| 150/500H, 2000A-58 kA                   | 8297A21H01           | 8297A21H02 |            |            |            |            | 3,539      |
| 150/500, 3000A-37 kA                    | 8297A19H01           | 8297A19H02 | 3A73912H01 | 3A73912H02 |            |            | 4,499      |
| 150/500H, 3000A-58 kA                   | 8297A22H01           | 8297A22H02 |            |            |            |            | 4,907      |
| 150/750, 1200A-58 kA                    | 8297A23H01           | 8297A23H02 | 3A73913H01 | 3A73913H02 |            | 3A73930H01 | 3,416      |
| 150/750H, 1200A-77 kA                   | 8297A26H01           | 8297A26H02 |            |            |            |            | 3,723      |
| 150/750, 2000A-58 kA                    | 8297A24H01           | 8297A24H02 | 3A73914H01 | 3A73914H02 |            | 3A73931H01 | 4,278      |
| 150/750H, 2000A-77 kA                   | 8297A27H01           | 8297A27H02 |            |            |            |            | 4,506      |
| 150/750, 3000A-58 kA                    | 8297A25H01           | 8297A25H02 | 3A73915H01 | 3A73915H02 |            |            | 5,580      |
| 150/750H, 3000A-77 kA                   | 8297A28H01           | 8297A28H02 |            |            |            |            | 6,513      |
| 150/1000, 1200A-77 kA ②<br>(7 in. V.I.) | 8297A29H01           | 8297A29H02 |            |            |            |            | 4,809      |
| 150/1000, 1200A-77 kA ②<br>(5 in. V.I.) | 8297A29H03           | 8297A29H04 | 3A73916H01 | 3A73916H02 |            |            | 4,809      |

① Quantity (3) interrupter assemblies are required per breaker. The style and list price represents quantity (1) interrupter assembly.  
 ② Vacuum interrupter (V.I.) assemblies have both 5-inch and 7-inch or 5-inch and 4-inch vacuum interrupters. These are identified by either (4 in. V.I.), (5 in. V.I.), or (7 in. V.I.) at the end of the description. When ordering match the V.I. diameter and corresponding rating.



**Interrupter Assembly,® continued**

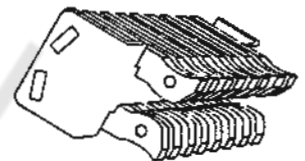
| Description                            | Ordering Information |            |            |            |          |          | List Price |
|--|----------------------|------------|------------|------------|----------|----------|------------|
|  | VCP-W                | VCPW-SE    | VCP-29WR   | VCP-29WRSE | VCP-20WR | VCP-18WR |            |
| 150/1000, 2000A 77 kA®<br>(7 in. V.I.) | 8297A30H01           | 8297A30H02 |            |            |          |          | \$5,974    |
| 150/1000, 2000A-77 kA®<br>(5 in. V.I.) | 8297A30H03           | 8297A30H04 | 3A73917H01 | 3A73917H02 |          |          | 5,974      |
| 150/1000, 3000A-77 kA                  | 8297A31H01           | 8297A31H02 | 3A73918H01 | 3A73918H02 |          |          | 6,636      |
| 270/25, 630A-40 kA                     | 8299A04H01           |            |            |            |          |          | 4,519      |
| 270/25, 1200A-40 kA                    | 8299A05H01           |            |            |            |          |          | 4,808      |
| 270/25, 2000A-40 kA                    | 8299A02H01           |            |            |            |          |          | 6,199      |



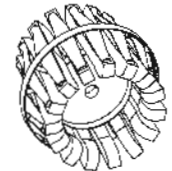
27kV VCP-W

**Primary Disconnect ®**

| Description         | Ordering Information |            |          |            |          |          | List Price |
|---------------------|----------------------|------------|----------|------------|----------|----------|------------|
|                     | VCP-W                | VCPW-SE    | VCP-29WR | VCP-29WRSE | VCP-20WR | VCP-18WR |            |
| VCPW ND 5 kV, 1200A | 502A851G12           |            |          |            |          |          | \$275      |
| Up to 15 kV, 1200A  | 508B022G01           | 508B022G01 |          |            |          |          | 275        |
| Up to 15 kV, 2000A  | 508B012G01           | 508B012G01 |          |            |          |          | 275        |
| Up to 15 kV, 3000A  | 692C037G01           | 692C037G01 |          |            |          |          | 585        |
| 27 kV, 630A         | 699B352G01           |            |          |            |          |          | 585        |
| 27 kV, 1200A        | 699B352G01           |            |          |            |          |          | 585        |
| 27 kV, 2000A        | 502A852G02           |            |          |            |          |          | 585        |



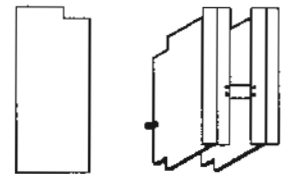
1200A and 2000A



All 3000A, All 27kV, and VCPW-ND

**Phase Barriers**

| Description                                   | Ordering Information |            |            |            |            |            | List Price |
|---|----------------------|------------|------------|------------|------------|------------|------------|
|   | VCP-W                | VCPW-SE    | VCP-29WR   | VCP-29WRSE | VCP-20WR   | VCP-18WR   |            |
| VCPW-ND 5 kV®                                 | 8829C10H01           |            |            |            |            |            | \$ 85      |
| Up to 15 kV®                                  | 691C176H04           | 691C176H04 | 691C176H04 | 691C176H04 | 690C848H01 | 5677B34H01 | 85         |
| All 50/350, 150/1000<br>& 3000A (7" V.I.)     | 691C648G01           | 691C648G01 | 691C648G01 | 691C648G01 |            |            | 155        |
| 27 kV®  | 691C218H01           |            |            |            |            |            | 85         |
| 50/350, 150/1000<br>1200A and 2000A (5" V.I.) | 691C176H04           | 691C176H04 |            |            |            |            | 85         |

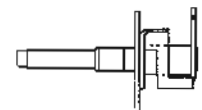


All 27kV and All Breakers Up to 15kV

All 50/350, 150/1000 (7" V.I.), and all 3000A

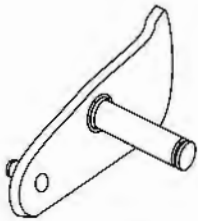
**Trip D-Shaft**

| Description | Ordering Information |            |            |            |            |            | List Price |
|-------------|----------------------|------------|------------|------------|------------|------------|------------|
|             | VCP-W                | VCPW-SE    | VCP-29WR   | VCP-29WRSE | VCP-20WR   | VCP-18WR   |            |
|             | 694C638G01           | 694C638G01 | 694C638G01 | 694C638G01 | 694C638G01 | 694C638G01 | \$498      |



All Breakers

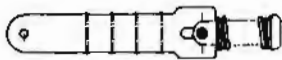
- ① Quantity (3) interrupter assemblies are required per breaker. The style and list price represents quantity (1) interrupter assembly.
- ② Vacuum interrupter (V.I.) assemblies have both 5-inch and 7-inch or 5-inch and 4-inch vacuum interrupters. These are identified by either (4 in. V.I.), (5 in. V.I.), or (7in. V.I.) at the end of the description. When ordering match the V.I. diameter and corresponding rating.
- ③ A phase barrier style represents a quantity of (1) barrier per style. VCP-W breakers may require 2 or 4 barriers per breaker (Reference IB 32-255).
- ④ Quantity (6) primary disconnects are required per breaker. Style numbers listed above represent quantity (1) primary disconnect.



All Breakers

**Trip Latch (Hatchet)**

| Description                      | Ordering Information |            |            |            |            |            | List Price |
|----------------------------------|----------------------|------------|------------|------------|------------|------------|------------|
|                                  | VCP-W                | VCPW-SE    | VCP-29WR   | VCP-29WRSE | VCP-20WR   | VCP-18WR   |            |
| Breakers Shipped before June '94 | 699B040G02           | 699B040G02 | 699B040G02 | 699B040G02 | 699B040G02 | 699B040G02 | \$141      |
| Breakers Shipped after June '94  | 699B040G03           | 699B040G03 | 699B040G03 | 699B040G03 | 699B040G03 | 699B040G03 | 141        |



All Breakers

**Push Rod Assembly**

| Description         | Ordering Information |            |            |            |            |          | List Price |
|---------------------|----------------------|------------|------------|------------|------------|----------|------------|
|                     | VCP-W                | VCPW-SE    | VCP-29WR   | VCP-29WRSE | VCP-20WR   | VCP-18WR |            |
| VCPW-ND 5 kV (blue) | 692C799G01           |            |            |            |            | ①        | \$250      |
| Up to 5 kV (blue)   |                      |            | 692C799G01 |            | 690C854G01 |          | 250        |
| Up to 5 kV (red)    |                      |            | 692C799G02 |            | 690C854G02 |          | 250        |
| Up to 15 kV (white) | 691C650G01           |            | 691C650G01 |            |            |          | 250        |
|                     |                      | 691C650G02 |            | 691C650G02 |            |          | 425        |
| Up to 15 kV (blue)  | 691C651G01           |            | 691C651G01 |            |            |          | 250        |
|                     |                      | 691C651G02 |            | 691C651G02 |            |          | 425        |
| Up to 15 kV (red)   | 691C651G03           |            | 691C651G03 |            |            |          | 250        |
|                     |                      | 691C651G04 |            | 691C651G04 |            |          | 425        |
| 27 kV (blue)        | 691C241G01           |            |            |            |            |          | 425        |



All Breakers

**Tie Bar**

| Description   | Ordering Information |            |            |            |            |          | List Price |
|---|----------------------|------------|------------|------------|------------|----------|------------|
|   | VCP-W                | VCPW-SE    | VCP-29WR   | VCP-29WRSE | VCP-20WR   | VCP-18WR |            |
| Up to 5 kV  |                      |            |            |            | 690C818H01 |          | \$125      |
| Up to 15 kV   | 3619A09H01           |            | 3619A09H01 |            |            |          | 125        |
|   |                      | 691C271H01 |            | 691C271H01 |            |          | 325        |
| 27 kV   | 691C223H01           |            |            |            |            |          | 325        |
| Up to 15 kV, Lower Support (350, 1000 MVA; 1200, 2000A) | 5697B19H01           | 686C575H01 | 5697B19H01 | 686C575H01 |            |          | 325        |



All Breakers

**Shock Absorber**

| Description | Ordering Information |            |            |            |          |            | List Price |
|-------------|----------------------|------------|------------|------------|----------|------------|------------|
|             | VCP-W                | VCPW-SE    | VCP-29WR   | VCP-29WRSE | VCP-20WR | VCP-18WR   |            |
|             | 5677R26H01           | 5677R26H01 | 5677B26H01 | 5677B26H01 |          | 5677B26H01 | \$160      |



Spade Terminals for VCP-W

**Charging Motor**

| Description       | Ordering Information |            |            |            |            |            | List Price |
|-------------------|----------------------|------------|------------|------------|------------|------------|------------|
|                   | VCP-W                | VCPW-SE    | VCP-29WR   | VCP-29WRSE | VCP-20WR   | VCP-18WR   |            |
| 48 Vdc            | 699B196G03           | 699B196G06 | 699B196G06 | 699B196G06 | 699B196G06 | 699B196G06 | \$625      |
| 125 Vdc / 120 Vac | 699B196G01           | 699B196G04 | 699B196G04 | 699B196G04 | 699B196G04 | 699B196G04 | 625        |
| 250 Vdc / 240 Vac | 699B196G02           | 699B196G05 | 699B196G05 | 699B196G05 | 699B196G05 | 699B196G05 | 625        |



Ring Terminals for VCPW-SE, VCP-29WR, 29WRSE, 20WR, 18WR

**Motor Brush Kit**

| Description | Ordering Information |            |            |            |            |            | List Price |
|-------------|----------------------|------------|------------|------------|------------|------------|------------|
|             | VCP-W                | VCPW-SE    | VCP-29WR   | VCP-29WRSE | VCP-20WR   | VCP-18WR   |            |
|             | 8063A77G01           | 8063A77G01 | 8063A77G01 | 8063A77G01 | 8063A77G01 | 8063A77G01 | \$65       |



All Motors

① The VCP-18WR Push Rod Assembly is included with the Pole Unit Replacement.



**Spring Release (Close) Coil**

| Description              | Ordering Information |            |            |            |            |            | List Price |
|--------------------------|----------------------|------------|------------|------------|------------|------------|------------|
|                          | VCP-W                | VCPW-SE    | VCP-29WR   | VCP-29WRSE | VCP-20WR   | VCP-18WR   |            |
| 48 Vdc                   | 3759A76G01           | 3759A76G11 | 3759A76G11 | 3759A76G11 | 3759A76G11 | 3759A76G11 | \$125      |
| 125 Vdc / 120 Vac        | 3759A76G02           | 3759A76G12 | 3759A76G12 | 3759A76G12 | 3759A76G12 | 3759A76G12 | 125        |
| 250 Vdc / 240 Vac        | 3759A76G03           | 3759A76G13 | 3759A76G13 | 3759A76G13 | 3759A76G13 | 3759A76G13 | 125        |
| Rectifier (120/240 Vac)Ⓢ | 3759A79G01           | 3759A79G02 | 3759A79G02 | 3759A79G02 | 3759A79G02 | 3759A79G02 | 160        |



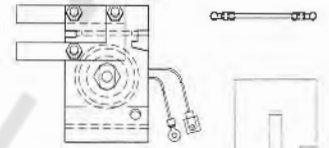
Spade Terminals for VCP-W and VCPW-ND



Ring Terminals for VCPW-SE, VCP-29WR, 29WRSE, 20WR, 18WR

**Second Shunt Trip Kit**

| Description | Ordering Information |            |            |            |            |            | List Price |
|-------------|----------------------|------------|------------|------------|------------|------------|------------|
|             | VCP-W                | VCPW-SE    | VCP-29WR   | VCP-29WRSE | VCP-20WR   | VCP-18WR   |            |
| 24 Vdc      | 694C636G04           | 8794C84G14 | 8794C84G14 | 8794C84G14 | 8794C84G14 | 8794C84G04 | \$400      |
| 48 Vdc      | 694C636G01           | 8794C84G11 | 8794C84G11 | 8794C84G11 | 8794C84G11 | 8794C84G01 | 400        |
| 125 Vdc     | 694C636G02           | 8794C84G12 | 8794C84G12 | 8794C84G12 | 8794C84G12 | 8794C84G02 | 400        |
| 250 Vdc     | 694C636G03           | 8794C84G13 | 8794C84G13 | 8794C84G13 | 8794C84G13 | 8794C84G03 | 400        |



Spade Terminals for VCP-W and VCPW-ND



Ring Terminals for All Other Breakers

**Shunt Trip Coil**

| Description           | Ordering Information |            |            |            |            |            | List Price |
|-----------------------|----------------------|------------|------------|------------|------------|------------|------------|
|                       | VCP-W                | VCPW-SE    | VCP-29WR   | VCP-29WRSE | VCP-20WR   | VCP-18WR   |            |
| 24 Vdc                | 3759A76G04           | 3759A76G14 | 3759A76G14 | 3759A76G14 | 3759A76G14 | 3759A76G14 | \$125      |
| 48 Vdc                | 3759A76G01           | 3759A76G11 | 3759A76G11 | 3759A76G11 | 3759A76G11 | 3759A76G11 | 125        |
| 125 Vdc / 125 Vac CAP | 3759A76G02           | 3759A76G12 | 3759A76G12 | 3759A76G12 | 3759A76G12 | 3759A76G12 | 125        |
| 250 Vdc / 240 Vac CAP | 3759A76G03           | 3759A76G13 | 3759A76G13 | 3759A76G13 | 3759A76G13 | 3759A76G13 | 125        |



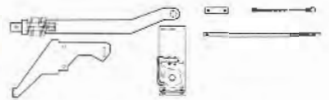
Spade Terminals for VCP-W and VCPW-ND



Ring Terminals for VCPW-SE, VCP-29WR, 29WRSE, 20WR, 18WR

**UV Trip Kit**

| Description | Ordering Information |            |            |            |            |            | List Price |
|-------------|----------------------|------------|------------|------------|------------|------------|------------|
|             | VCP-W                | VCPW-SE    | VCP-29WR   | VCP-29WRSE | VCP-20WR   | VCP-18WR   |            |
| 48 Vdc      | 691C274G01           | 691C274G01 | 8794C81G01 | 8794C81G01 | 8794C81G01 | 8794C81G01 | \$1,188    |
| 125 Vdc     | 691C274G02           | 691C274G02 | 8794C81G02 | 8794C81G02 | 8794C81G02 | 8794C81G02 | 1,188      |
| 250 Vdc     | 691C274G03           | 691C274G03 | 8794C81G03 | 8794C81G03 | 8794C81G03 | 8794C81G03 | 1,188      |
| 120 Vac     | 691C274G04           | 691C274G04 | 8794C81G04 | 8794C81G04 | 8794C81G04 | 8794C81G04 | 1,188      |
| 240 Vac     | 691C274G05           | 691C274G05 | 8794C81G05 | 8794C81G05 | 8794C81G05 | 8794C81G05 | 1,188      |



(Rectifier is included for AC Voltages Only)

**UV Trip Coil**

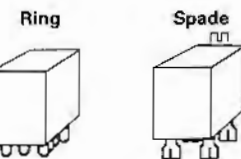
| Description | Ordering Information |            |            |            |            |            | List Price |
|-------------|----------------------|------------|------------|------------|------------|------------|------------|
|             | VCP-W                | VCPW-SE    | VCP-29WR   | VCP-29WRSE | VCP-20WR   | VCP-18WR   |            |
| 48 Vdc      | 8064A19G01           | 8064A19G01 | 8064A19G01 | 8064A19G01 | 8064A19G01 | 8064A19G01 | \$125      |
| 125 Vdc     | 8064A19G02           | 8064A19G02 | 8064A19G02 | 8064A19G02 | 8064A19G02 | 8064A19G02 | 125        |
| 250 Vdc     | 8064A19G03           | 8064A19G03 | 8064A19G03 | 8064A19G03 | 8064A19G03 | 8064A19G03 | 125        |
| 120 Vac     | 8064A19G07           | 8064A19G07 | 8064A19G07 | 8064A19G07 | 8064A19G07 | 8064A19G07 | 285        |
| 240 Vac     | 8064A19G08           | 8064A19G08 | 8064A19G08 | 8064A19G08 | 8064A19G08 | 8064A19G08 | 285        |



Ring Terminals

**Anti-Pump (Y) Relay**

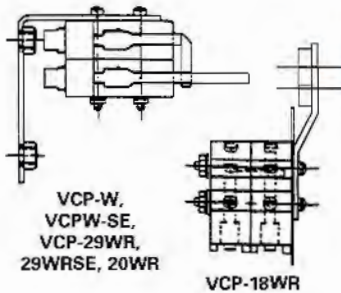
| Description | Ordering Information |            |            |            |            |            | List Price |
|-------------|----------------------|------------|------------|------------|------------|------------|------------|
|             | VCP-W                | VCPW-SE    | VCP-29WR   | VCP-29WRSE | VCP-20WR   | VCP-18WR   |            |
| 48 Vdc      | 3759A74G03           | 8237A27H03 | 8237A27H03 | 8237A27H03 | 8237A27H03 | 8237A27H03 | \$85       |
| 125 Vdc     | 3759A74G04           | 8237A27H04 | 8237A27H04 | 8237A27H04 | 8237A27H04 | 8237A27H04 | 85         |
| 250 Vdc     | 3759A74G05           | 8237A27H05 | 8237A27H05 | 8237A27H05 | 8237A27H05 | 8237A27H05 | 85         |
| 120 Vac     | 3759A74G01           | 8237A27H01 | 8237A27H01 | 8237A27H01 | 8237A27H01 | 8237A27H01 | 85         |
| 240 Vac     | 3759A74G02           | 8237A27H02 | 8237A27H02 | 8237A27H02 | 8237A27H02 | 8237A27H02 | 85         |



All 27 kV, VCP-29WR, 29WRSE, 20WR, 18WR, and VCPW-SE

VCP-W and VCPW-ND

Ⓢ A rectifier is required for AC Closed Circuits Only.



**Motor Cut Off Switch**

| Description | Ordering Information |            |            |            |            |            | List Price |
|-------------|----------------------|------------|------------|------------|------------|------------|------------|
|             | VCP-W                | VCPW-SE    | VCP-29WR   | VCP-29WRSE | VCP-20WR   | VCP-18WR   |            |
|             | 699B199G01           | 699B199G04 | 699B199G04 | 699B199G04 | 699B199G04 | 5677B02G04 | \$300      |



All Breakers

**Latch Check Switch**

| Description | Ordering Information |            |            |            |            |            | List Price |
|-------------|----------------------|------------|------------|------------|------------|------------|------------|
|             | VCP-W                | VCPW-SE    | VCP-29WR   | VCP-29WRSE | VCP-20WR   | VCP-18WR   |            |
|             | 699B147G01           | 699B147H04 | 699B147H04 | 699B147H04 | 699B147H04 | 699B147H04 | \$180      |



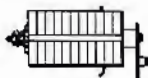
All Breakers

**Position Switch (PS1)**

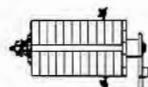
| Description | Ordering Information |            |            |            |            |            | List Price |
|-------------|----------------------|------------|------------|------------|------------|------------|------------|
|             | VCP-W                | VCPW-SE    | VCP-29WR   | VCP-29WRSE | VCP-20WR   | VCP-18WR   |            |
|             | 8064A03G01           | 699B147H01 | 699B147H01 | 699B147H01 | 699B147H01 | 699B147H01 | \$165      |

**Position Switch (PS2)**

| Description | Ordering Information |            |            |            |            |            | List Price |
|-------------|----------------------|------------|------------|------------|------------|------------|------------|
|             | VCP-W                | VCPW-SE    | VCP-29WR   | VCP-29WRSE | VCP-20WR   | VCP-18WR   |            |
|             | 3759A93G01           | 3759A93H02 | 3759A93H02 | 3759A93H02 | 3759A93H02 | 3759A93H02 | \$165      |



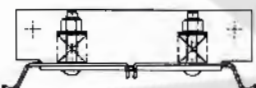
Spade Terminals for VCP-W



Ring Terminals for VCPW-SE,  
VCP-29WR, 29WRSE, 20WR,  
18WR, VCPW-ND

**Auxiliary Switch**

| Description | Ordering Information |            |            |            |            |            | List Price |
|-------------|----------------------|------------|------------|------------|------------|------------|------------|
|             | VCP-W                | VCPW-SE    | VCP-29WR   | VCP-29WRSE | VCP-20WR   | VCP-18WR   |            |
| VCPW-ND     | 698B822H01           | 5697B02G01 | 5697B02G01 | 5697B02G01 | 5697B02G01 | 5697B02G01 | \$230      |
|             | 5697B02G02           |            |            |            |            |            | 230        |



VCP-W, VCPW-SE and VCPW-ND

**Ground Contact Assembly**

| Description | Ordering Information |            |          |            |          |          | List Price |
|-------------|----------------------|------------|----------|------------|----------|----------|------------|
|             | VCP-W                | VCPW-SE    | VCP-29WR | VCP-29WRSE | VCP-20WR | VCP-18WR |            |
| VCPW-ND     | 691C506G01           | 691C506G01 |          |            |          |          | \$100      |
|             | 691C506G02           |            |          |            |          |          | 100        |



All Breakers

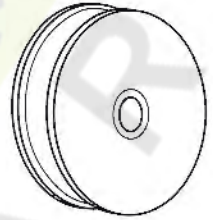
**Front Panel (without Eschuteon)**

| Description           | Ordering Information |            |            |            |            |            | List Price |
|-----------------------|----------------------|------------|------------|------------|------------|------------|------------|
|                       | VCP-W                | VCPW-SE    | VCP-29WR   | VCP-29WRSE | VCP-20WR   | VCP-18WR   |            |
| VCPW-ND               | 8829C48H01           |            |            |            |            |            | \$350      |
| 3000A, 350 & 1000 MVA | 691C655H01           | 691C655H01 | 691C655H01 | 691C655H01 | 6617C70H02 |            | 350        |
| 27 kV                 | 691C214H01           |            |            |            |            |            | 350        |
| All Others            | 691C192H02           | 691C192H02 | 691C192H02 | 691C192H02 |            | 4D13368H01 | 350        |



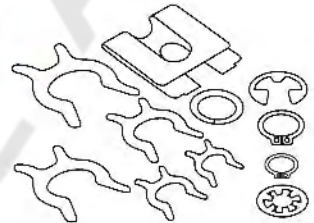
**Breaker Wheel**

| Description | Ordering Information |            |          |            |          |          | List Price |
|-------------|----------------------|------------|----------|------------|----------|----------|------------|
|             | VCP-W                | VCPW-SE    | VCP-29WR | VCP-29WRSE | VCP-20WR | VCP-18WR |            |
| VCPW-ND     | 8237A50H01           |            |          |            |          |          | \$125      |
| All Others  | 3617A99H02           | 3617A99H02 |          |            |          |          | 125        |



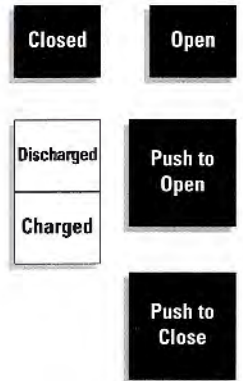
**Fastener Kit**

| Description | Ordering Information |            |            |            |            |            | List Price |
|-------------|----------------------|------------|------------|------------|------------|------------|------------|
|             | VCP-W                | VCPW-SE    | VCP-29WR   | VCP-29WRSE | VCP-20WR   | VCP-18WR   |            |
|             | 8061A01G01           | 8061A01G01 | 8061A01G01 | 8061A01G01 | 8061A01G01 | 8061A01G01 | \$50       |



**Labels Kit**

| Description | Ordering Information |            |            |            |            |            | List Price |
|-------------|----------------------|------------|------------|------------|------------|------------|------------|
|             | VCP-W                | VCPW-SE    | VCP-29WR   | VCP-29WRSE | VCP-20WR   | VCP-18WR   |            |
|             | 8295A45G01           | 8295A45G01 | 8295A45G01 | 8295A45G01 | 8295A45G01 | 8295A45G01 | \$45       |



VCP-WR Series 29

VCP-WR Series 20

VCP-WR Series 18



### Medium Voltage Product Literature

|               |   |
|---------------|---|
| SA 11671      | VacClad-W Switchgear                                |
| SA 11671AR    | VacClad-W Arc Resistant Switchgear                  |
| SA 11713      | VCP-W World Class Switchgear                        |
| IB 32-255     | VCP-W Breaker Instruction Manual                    |
| IB 8295A61H01 | VCP-WR Breaker Instruction Manual                   |
| RPD 32-255    | VacClad-W Breaker and Switchgear Renewal Parts Data |
| AD 32-265     | VacClad-W Application Data                          |

### Recommended Spare Parts for Stock

An adequate stock of spare parts will help minimize emergency situations and can substantially reduce production downtime. The quantities listed are recommended for 5 breakers of the same rating. **Please include complete style numbers**, as required for your application, and forward all inquiries to your local sales representative.

| Item | Recommended Quantity for Stock | Description                 | Style Number |
|------|--------------------------------|-----------------------------|--------------|
| 1    | 3                              | Interrupter Assembly        | ①            |
| 2    | 6                              | Primary Disconnect          | ①            |
| 3    | 3                              | Push Rod Assembly           | ①            |
| 4    | 1                              | Charging Motor              | ①            |
| 5    | 1                              | Motor Brush Kit             | 8063A77G01   |
| 6    | 1                              | Spring Release (Close) Coil | ①            |
| 7    | 1                              | Shunt Trip Coil             | ①            |
| 8    | 1                              | Anti-Pump Relay             | ①            |
| 9    | 1                              | Fastener Kit                | 8061A01G01   |
| 10   | 1                              | Labels Kit                  | 8295A45G01   |

① Select per Breaker Rating or Control Ratings.

### Complete Factory and ANSI Design Testing

All VCP-W Vacuum Circuit Breakers meet or exceed applicable ANSI standards. Tests include: mechanical endurance, power interruption, momentary current, and BIL. Certification to the applicable design tests are available from Cutler-Hammer upon request. Certified factory production test reports are also available.

### Warranty

VCP-W Vacuum Circuit Breakers and genuine VCP-W renewal parts are covered under the standard Cutler-Hammer warranty. Contact Cutler-Hammer for details.

### Notice for Commercial Grade Components

THE DESCRIPTION AND SPECIFICATIONS FOR THE PRODUCTS DESCRIBED HEREIN ARE PROVIDED FOR GENERAL COMMERCIAL USE AND NOT APPLICABLE FOR USE IN A NUCLEAR POWER PLANT. ADDITIONAL CERTIFICATION MAY BE AVAILABLE UPON REQUEST TO QUALIFY THESE PRODUCTS FOR USE IN SAFETY-RELATED APPLICATIONS IN A NUCLEAR FACILITY.

## Cutler-Hammer

Westinghouse & Cutler-Hammer Products  
Five Parkway Center  
Pittsburgh, Pennsylvania, U.S.A. 15220