



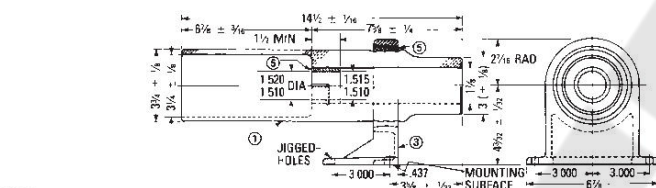
Type DHP Housings

Porcelain Main Contact Mounting Bottles (Old Design)

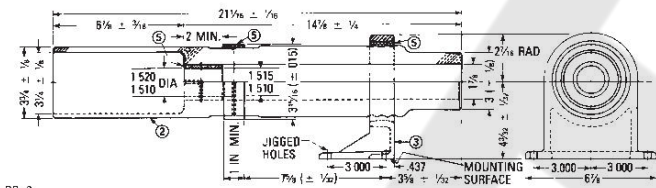
The *original DHP* design had bottle assemblies that mounted on a horizontal mounting plate. The design change to new vertical type mountings went into effect, for 15 kV units, around 1966 and for 5 kV units, around 1968.

The old horizontal mounted bottles are identified as follows:

For 5 kV – 1200 Amp



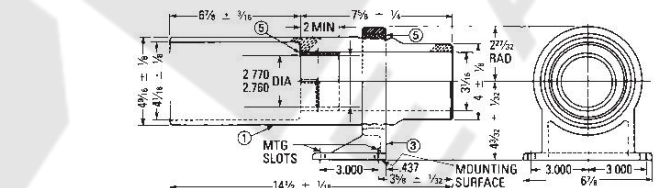
GR 1



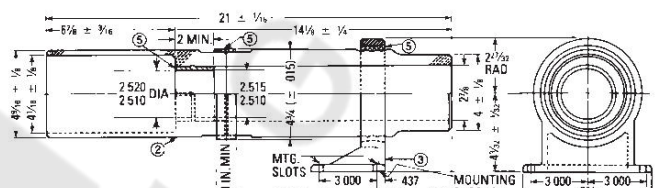
GR 2

437D911G01 – Upper (Short) ①
437D911G02 – Lower (Long) ①

For 5 kV – 2000 Amp



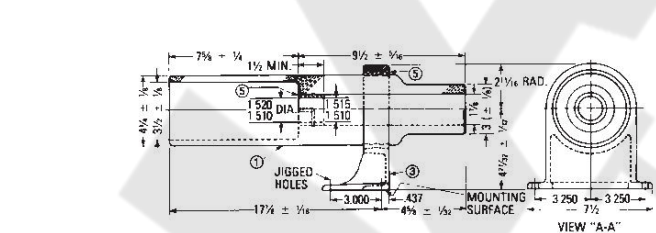
GR 1



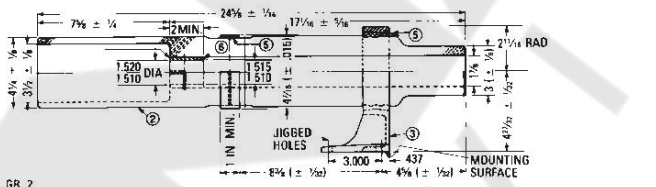
GR 2

437D914G01 – Upper (Short) ①
437D914G02 – Lower (Long) ①

For 15 kV – 1200 Amp



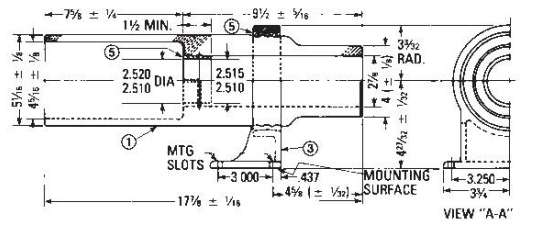
GR 1



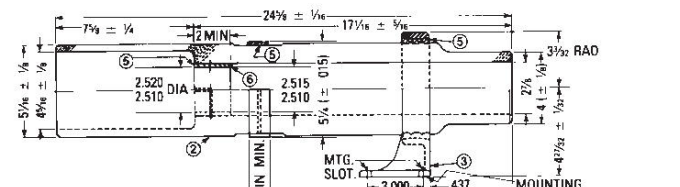
GR 2

437D917G01 – Upper (Short) ①
437D917G02 – Lower (Long) ①

For 15 kV – 2000 Amp



GR 1



GR 2

437D920G01 – Upper (Short) ①
437D920G02 – Lower (Long) ①

NOTE: When ordering any of the above bottles for field replacement, a copy of drawing 658A430 must be ordered for instructional purposes. In addition to the drawing, for every three bottles ordered, a four ounce tube of silastic rubber 45793BX00F must also be ordered.

① A quantity of three each, upper and lower, per cell, is normally required.